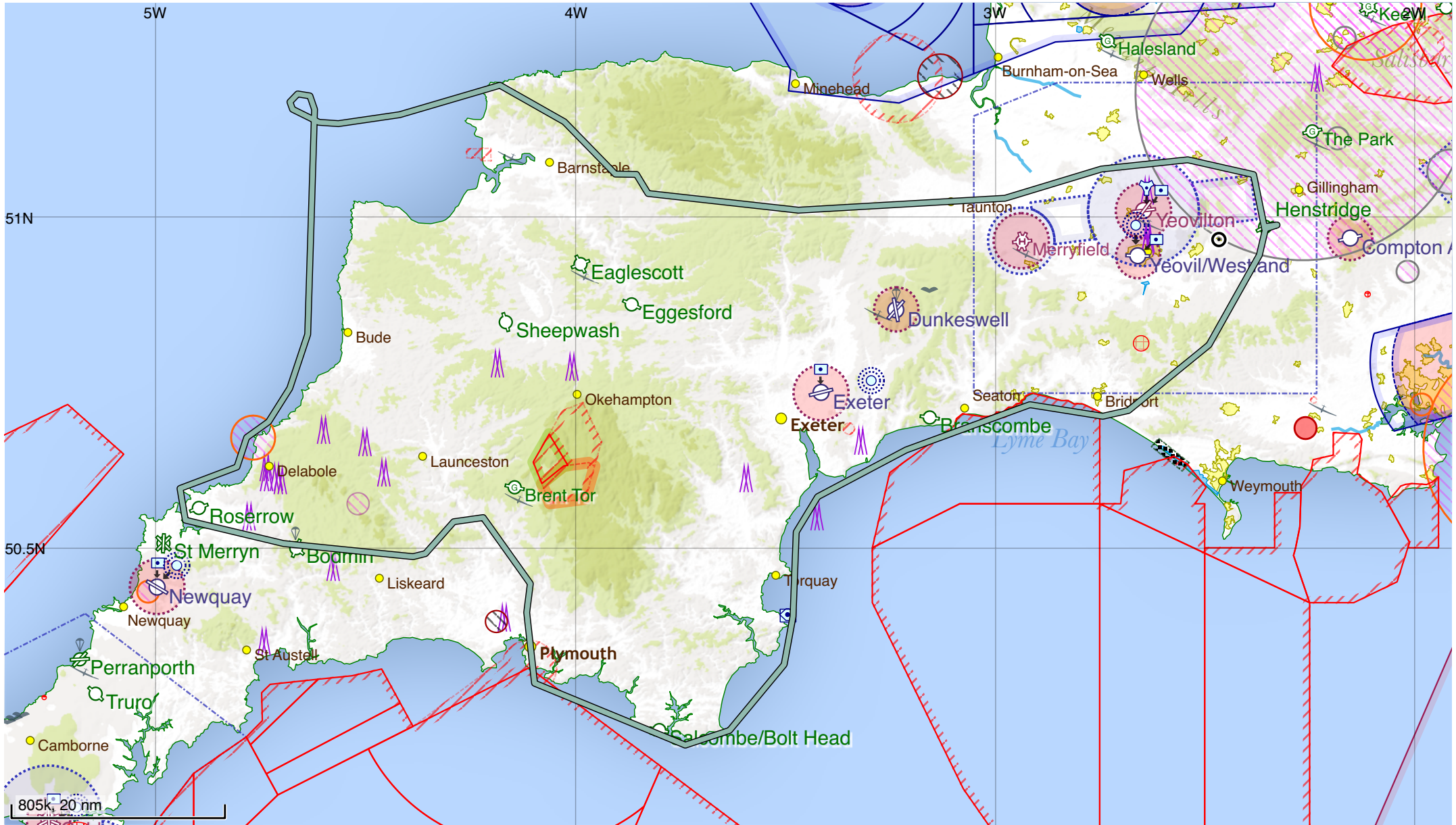
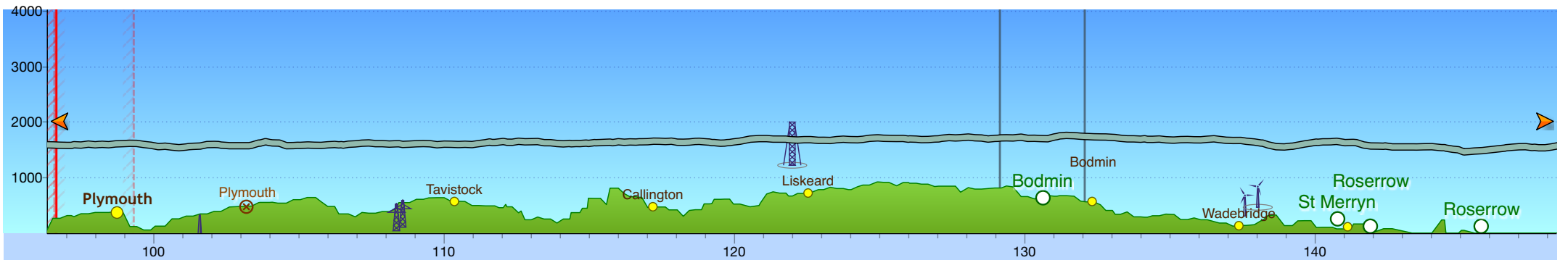
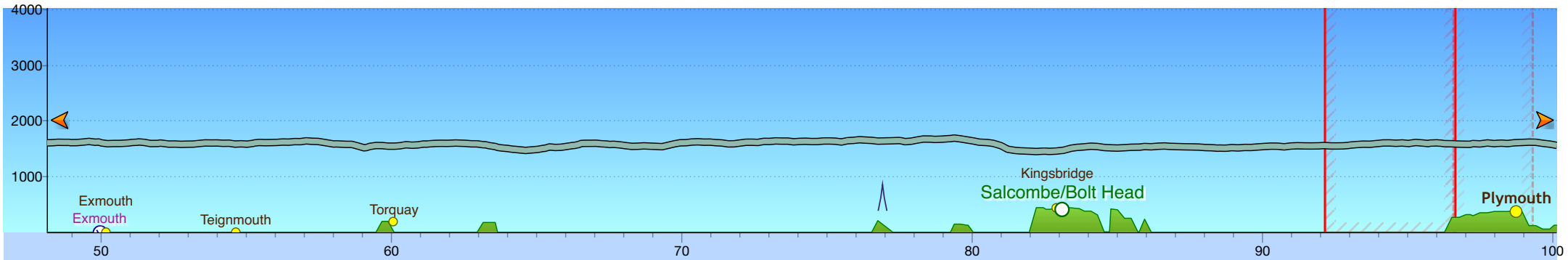
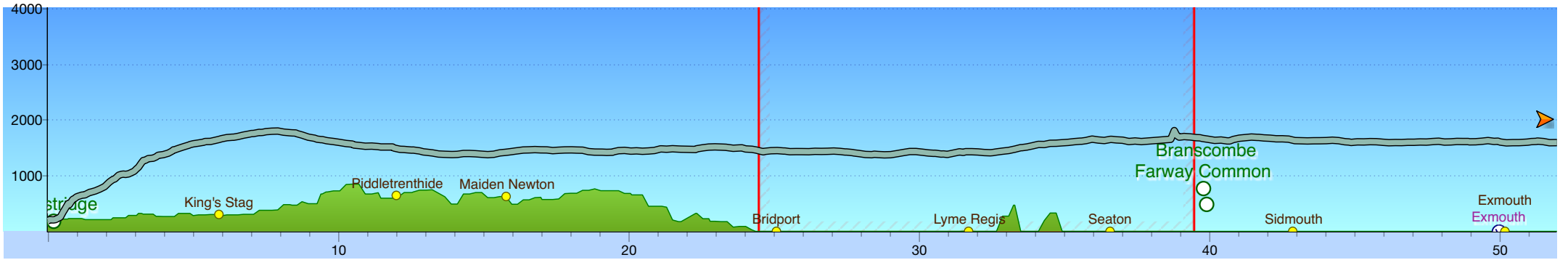


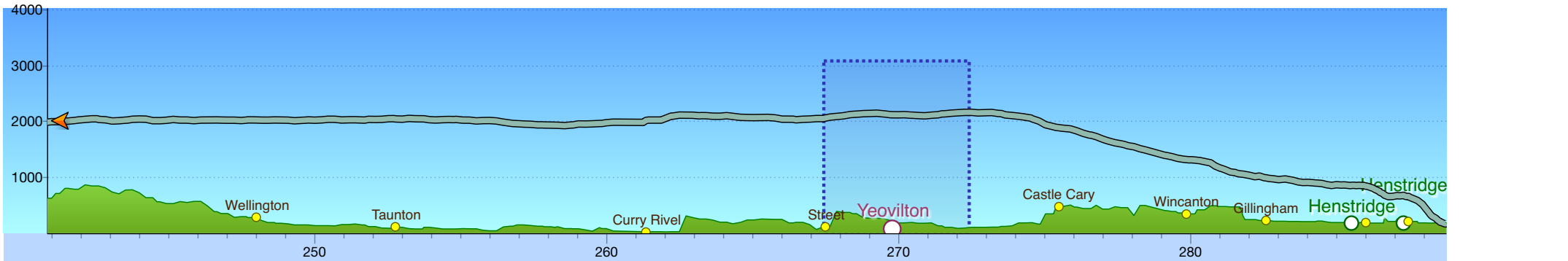
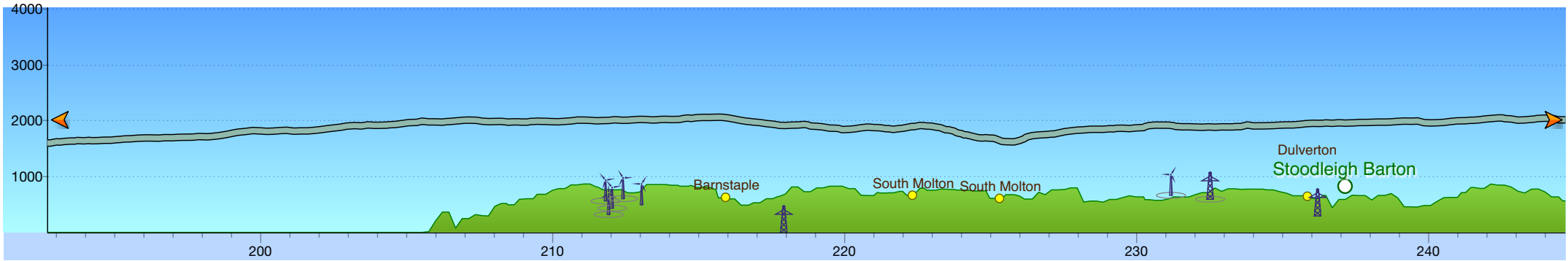
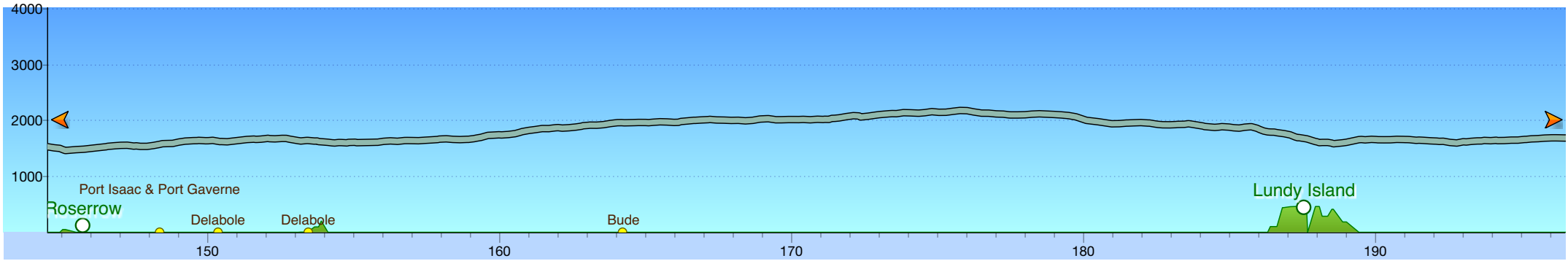
✈ **Henstridge** TAKEOFF: 12/13/2015 12:22 Z

DISTANCE: 289 nm, FLIGHT TIME: 1 hr 49 m, LOGGED TIME: 1 hr 50 m, MAXIMUM ALTITUDE: 2,174 ft, MAXIMUM SPEED: 183 kt, AVERAGE SPEED: 158 kt

✈ **Henstridge** LANDING: 12/13/2015 14:12 Z, LOG STOP: 12/13/2015 14:12 Z







Events

Entered Danger Area EGD012	12:33 Z	25 nm	1,440 ft	158 kt	Exited Danger Area EGD012	12:38 Z	39 nm	1,686 ft	151 kt
Passed BRIPO	12:33 Z	25 nm	1,431 ft	159 kt	Passed BHD (Berry Head) VOR/DME	12:48 Z	63 nm	1,545 ft	149 kt

 Passed Salcombe/Bolt Head Airfield	12:56 Z	83 nm	1,464 ft	165 kt
 Entered Danger Area EGD009A	12:59 Z	92 nm	1,550 ft	163 kt
 Exited Danger Area EGD009A	13:01 Z	97 nm	1,582 ft	181 kt
 Entered Danger Area EGD009	13:01 Z	97 nm	1,582 ft	181 kt
 Exited Danger Area EGD009	13:02 Z	99 nm	1,616 ft	176 kt
 Passed Plymouth Disused Airfield	13:03 Z	103 nm	1,570 ft	170 kt
 Passed Horn of Plenty Heliport	13:06 Z	111 nm	1,609 ft	170 kt
 Entered Bodmin Parachute Dropzone	13:13 Z	129 nm	1,708 ft	165 kt

 Passed Bodmin Airfield	13:13 Z	131 nm	1,698 ft	165 kt
 Exited Bodmin Parachute Dropzone	13:14 Z	132 nm	1,736 ft	166 kt
 Passed Lundy Island Airfield	13:33 Z	188 nm	1,676 ft	150 kt
 Passed Lundy Island Heliport	13:33 Z	188 nm	1,603 ft	162 kt
 Passed MULIT	13:53 Z	242 nm	2,023 ft	166 kt
 Entered Yeovilton MATZ	14:02 Z	267 nm	2,049 ft	167 kt
 Exited Yeovilton MATZ	14:04 Z	272 nm	2,155 ft	167 kt
 Passed Holbrook House Heliport	14:07 Z	278 nm	1,488 ft	152 kt